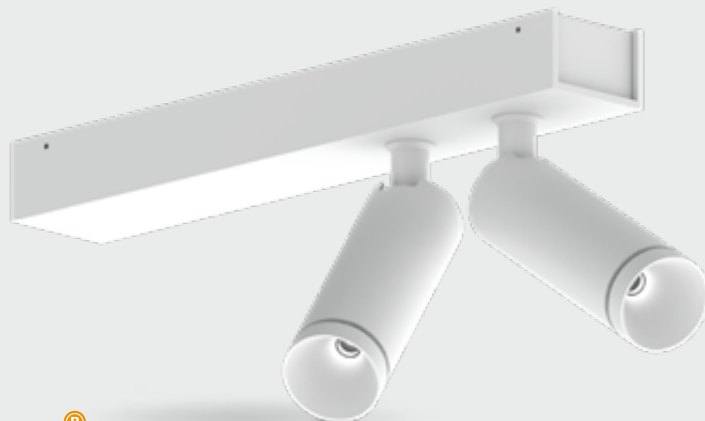


#### FEATURES

- High end aluminum heatsink with a unique elegant design
- Illuxtron patented optical lens system that makes pin-hole light possible
- Anti glare cap that ensures no stray light. The total light opening is only 8mm!



**Bartenbach**  
lighting optics

#### COLOURS

Available colours:



Nr	Housing	Ring
	RAL 9016	
XX=61	Matt white	/ Gold
XX=63	Matt white	/ Silver
XX=62	Matt white	/ Black
XX=65	Matt white	/ White
XX=52	Matt white	/ Beige
XX=53	Matt white	/ Bronze
XX=54	Matt white	/ Green



Nr	Housing	Ring
	RAL 9005	
XX=71	Matt black	/ Gold
XX=74	Matt black	/ Silver
XX=72	Matt black	/ Black
XX=76	Matt black	/ White
XX=70	Matt black	/ Beige
XX=78	Matt black	/ Bronze
XX=79	Matt black	/ Green

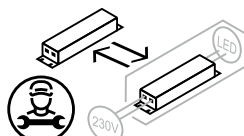
## Pointer Spot SM 2L LV

Adjustable

### SPECIFICATIONS

Beam angle (FWHM)	35° (45° FWTM) / 60° (80° FWTM)
Fixture material	Housing: Die cast aluminium
Environment	Indoor
IK rate	IK10
Operating temperature (Ta)	-20°C / +45°C <sup>1</sup>
Safety marks	EN60598 / EN62031 / EN62471
EMC compliance	EN55015
Colour consistency (SDCM)	MacAdam step 3
Warranty	7 years * (within the European Union and the countries of the Free Trade Association for products delivered after 1 May 2015)
Energy class	These products contain a light source of energy efficiency class F (2700K/3000K) and class E (4000K)

This luminaire contains built-in LED lamps. There are no exchangeable parts inside the luminaire. EU 874/2012



IP20

**POINTER SPOT SM 2L LV** (dimmable - incl. individual power supply)

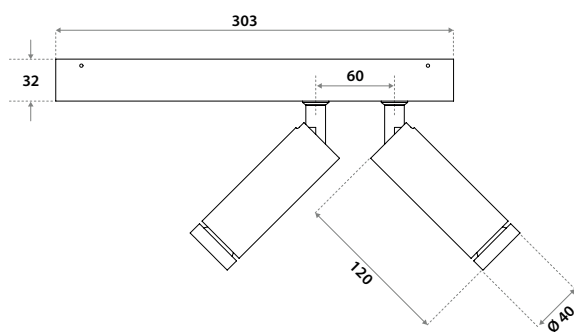
**CRI93 220-240V**
**ITEM SPECIFICATIONS (PART A)**

Description	Item code	Input	W	Lm	Lm/W	CRI (typ.)	UGR	Pf	Ripple	Inrush current	B-16A Fuse
Pointer Spot SM 2L LV 35° 325 Lm 2700K CRI93 No dim	OS3W03XXLU02	220-240V	18,8	325	35	93	8.3	0.98	<5%	7A 13μS	50 pcs
Pointer Spot SM 2L LV 35° 350 Lm 3000K CRI93 No dim	OS3W03XXLV02	220-240V	18,8	350	37	93	8.5	0.98	<5%	7A 13μS	50 pcs
Pointer Spot SM 2L LV 35° 375 Lm 4000K CRI93 No dim	OS3W03XXLW02	220-240V	18,8	375	40	93	8.8	0.98	<5%	7A 13μS	50 pcs
Pointer Spot SM 2L LV 60° 475 Lm 2700K CRI93 No dim	OS3W03XXLX02	220-240V	18,8	475	51	93	19.5	0.98	<5%	7A 13μS	50 pcs
Pointer Spot SM 2L LV 60° 525 Lm 3000K CRI93 No dim	OS3W03XXLY02	220-240V	18,8	525	56	93	19.9	0.98	<5%	7A 13μS	50 pcs
Pointer Spot SM 2L LV 60° 575 Lm 4000K CRI93 No dim	OS3W03XXLZ02	220-240V	18,8	575	61	93	20.2	0.98	<5%	7A 13μS	50 pcs
Pointer Spot SM 2L LV 35° 325 Lm 2700K CRI93 Triac dim	OS3W03XXLG02	220-240V	18,8	325	35	93	8.3	0.95	3%	5A 50μS	50 pcs
Pointer Spot SM 2L LV 35° 350 Lm 3000K CRI93 Triac dim	OS3W03XXLH02	220-240V	18,8	350	37	93	8.5	0.95	3%	5A 50μS	50 pcs
Pointer Spot SM 2L LV 35° 375 Lm 4000K CRI93 Triac dim	OS3W03XXLJ02	220-240V	18,8	375	40	93	8.8	0.95	3%	5A 50μS	50 pcs
Pointer Spot SM 2L LV 60° 475 Lm 2700K CRI93 Triac dim	OS3W03XXLK02	220-240V	18,8	475	51	93	19.5	0.95	3%	5A 50μS	50 pcs
Pointer Spot SM 2L LV 60° 525 Lm 3000K CRI93 Triac dim	OS3W03XXLL02	220-240V	18,8	525	56	93	19.9	0.95	3%	5A 50μS	50 pcs
Pointer Spot SM 2L LV 60° 575 Lm 4000K CRI93 Triac dim	OS3W03XXLM02	220-240V	18,8	575	61	93	20.2	0.95	3%	5A 50μS	50 pcs
Pointer Spot SM 2L LV 35° 325 Lm 2700K CRI93 Dali	OS3W03XXLO02	220-240V	18,8	325	35	93	8.3	0.95	<3%	5A 50μS	50 pcs
Pointer Spot SM 2L LV 35° 350 Lm 3000K CRI93 Dali	OS3W03XXLI02	220-240V	18,8	350	37	93	8.5	0.95	<3%	5A 50μS	50 pcs
Pointer Spot SM 2L LV 35° 375 Lm 4000K CRI93 Dali	OS3W03XXLQ02	220-240V	18,8	375	40	93	8.8	0.95	<3%	5A 50μS	50 pcs
Pointer Spot SM 2L LV 60° 475 Lm 2700K CRI93 Dali	OS3W03XXLX02	220-240V	18,8	475	51	93	19.5	0.95	<3%	5A 50μS	50 pcs
Pointer Spot SM 2L LV 60° 525 Lm 3000K CRI93 Dali	OS3W03XXLY02	220-240V	18,8	525	56	93	19.9	0.95	<3%	5A 50μS	50 pcs
Pointer Spot SM 2L LV 60° 575 Lm 4000K CRI93 Dali	OS3W03XXLZ02	220-240V	18,8	575	61	93	20.2	0.95	<3%	5A 50μS	50 pcs

**ITEM SPECIFICATIONS (PART B)**

Description	Safety class	Energy class	Weight	Dimensions single carton	Quantity per carton	Expected Lifetime			Reported Lifetime*		
						L70B10	L80B10	L90B10	L70B10	L80B10	L90B10
Pointer Spot SM 2L LV LV 2700K CRI93	II	F	958 gr	310x180x60 mm	42 pcs	177.000 hrs	113.000 hrs	51.000 hrs	>102.000 hrs	>102.000 hrs	51.000 hrs
Pointer Spot SM 2L LV LV 3000K CRI93	II	F	958 gr	310x180x60 mm	42 pcs	177.000 hrs	113.000 hrs	51.000 hrs	>102.000 hrs	>102.000 hrs	51.000 hrs
Pointer Spot SM 2L LV LV 4000K CRI93	II	E	958 gr	310x180x60 mm	42 pcs	177.000 hrs	113.000 hrs	51.000 hrs	>102.000 hrs	>102.000 hrs	51.000 hrs

All values are measured at 230V (+/- 7%). \*Based on 17.000hrs of LM80 testing at 700mA and a Tc85 °C.

**DIMENSIONS**


**POINTER SPOT SM 2L LV** (dimmable - incl. individual power supply)

**CRI82 220-240V**

**ITEM SPECIFICATIONS (PART A)**

Description	Item code	Input	W	Lm	Lm/W	CRI (typ.)	UGR	Pf	Ripple	Inrush current	B-16A Fuse
Pointer Spot SM 2L LV 35° 500 Lm 2700K CRI82 No dim	OS2703XXLU02	220-240V	18,4	500	54	82	9,8	0,98	<5%	7A 13μS	50 pcs
Pointer Spot SM 2L LV 35° 525 Lm 3000K CRI82 No dim	OS2703XXLV02	220-240V	18,4	525	57	82	9,9	0,98	<5%	7A 13μS	50 pcs
Pointer Spot SM 2L LV 35° 550 Lm 4000K CRI82 No dim	OS2703XXLW02	220-240V	18,4	550	60	82	10,1	0,98	<5%	7A 13μS	50 pcs
Pointer Spot SM 2L LV 60° 550 Lm 2700K CRI82 No dim	OS2703XXLX02	220-240V	18,4	550	60	82	20	0,98	<5%	7A 13μS	50 pcs
Pointer Spot SM 2L LV 60° 600 Lm 3000K CRI82 No dim	OS2703XXLY02	220-240V	18,4	600	65	82	20,3	0,98	<5%	7A 13μS	50 pcs
Pointer Spot SM 2L LV 60° 650 Lm 4000K CRI82 No dim	OS2703XXLZ02	220-240V	18,4	650	71	82	20,6	0,98	<5%	7A 13μS	50 pcs
Pointer Spot SM 2L LV 35° 500 Lm 2700K CRI82 Triac dim	OS2703XXLG02	220-240V	18,4	500	54	82	9,8	0,95	3%	5A 50μS	50 pcs
Pointer Spot SM 2L LV 35° 525 Lm 3000K CRI82 Triac dim	OS2703XXLH02	220-240V	18,4	525	57	82	9,9	0,95	3%	5A 50μS	50 pcs
Pointer Spot SM 2L LV 35° 550 Lm 4000K CRI82 Triac dim	OS2703XXLJ02	220-240V	18,4	550	60	82	10,1	0,95	3%	5A 50μS	50 pcs
Pointer Spot SM 2L LV 60° 550 Lm 2700K CRI82 Triac dim	OS2703XXLK02	220-240V	18,4	550	60	82	20	0,95	3%	5A 50μS	50 pcs
Pointer Spot SM 2L LV 60° 600 Lm 3000K CRI82 Triac dim	OS2703XXLL02	220-240V	18,4	600	65	82	20,3	0,95	3%	5A 50μS	50 pcs
Pointer Spot SM 2L LV 60° 625 Lm 4000K CRI82 Triac dim	OS2703XXLM02	220-240V	18,4	650	71	82	20,6	0,95	3%	5A 50μS	50 pcs
Pointer Spot SM 2L LV 35° 500 Lm 2700K CRI82 Dali	OS2703XXL002	220-240V	18,4	500	54	82	9,8	0,95	<3%	5A 50μS	50 pcs
Pointer Spot SM 2L LV 35° 525 Lm 3000K CRI82 Dali	OS2703XXL102	220-240V	18,4	525	57	82	9,9	0,95	<3%	5A 50μS	50 pcs
Pointer Spot SM 2L LV 35° 550 Lm 4000K CRI82 Dali	OS2703XXL202	220-240V	18,4	550	60	82	10,1	0,95	<3%	5A 50μS	50 pcs
Pointer Spot SM 2L LV 60° 550 Lm 2700K CRI82 Dali	OS2703XXL302	220-240V	18,4	550	60	82	20	0,95	<3%	5A 50μS	50 pcs
Pointer Spot SM 2L LV 60° 600 Lm 3000K CRI82 Dali	OS2703XXL402	220-240V	18,4	600	65	82	20,3	0,95	<3%	5A 50μS	50 pcs
Pointer Spot SM 2L LV 60° 650 Lm 4000K CRI82 Dali	OS2703XXL502	220-240V	18,4	650	71	82	20,6	0,95	<3%	5A 50μS	50 pcs

**ITEM SPECIFICATIONS (PART B)**

Description	Safety class	Energy class	Weight	Dimensions single carton	Quantity per carton	Expected Lifetime			Reported Lifetime*		
						L70B10	L80B10	L90B10	L70B10	L80B10	L90B10
Pointer Spot SM 2L LV LV 2700K CRI93	II	F	958 gr	310x180x60 mm	42 pcs	177.000 hrs	113.000 hrs	51.000 hrs	>102.000 hrs	>102.000 hrs	51.000 hrs
Pointer Spot SM 2L LV LV 3000K CRI93	II	F	958 gr	310x180x60 mm	42 pcs	177.000 hrs	113.000 hrs	51.000 hrs	>102.000 hrs	>102.000 hrs	51.000 hrs
Pointer Spot SM 2L LV LV 4000K CRI93	II	E	958 gr	310x180x60 mm	42 pcs	177.000 hrs	113.000 hrs	51.000 hrs	>102.000 hrs	>102.000 hrs	51.000 hrs

All values are measured at 230V (+/- 7%). \*Based on 17.000hrs of LM80 testing at 700mA and a Tc85 °C.

**DIMENSIONS**

